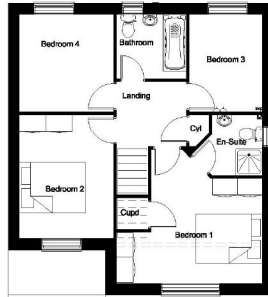


REVISED PLAN


THIS COPY HAS BEEN MADE BY OR WITH THE AUTHORITY OF HYNDLEY DISTRICT COUNCIL PURSUANT TO SECTION 47 OF THE COPYRIGHT DESIGN AND PATENTS ACT 1988 UNLESS THAT ACT PROVIDES A REVERSE USE RIGHTS TO COPYRIGHT. THIS COPY MUST NOT BE COPIED WITHOUT THE PERMISSION OF THE COPYRIGHT OWNER.



Ground Floor



First Floor

Revisions	
Development Firthland Road, Pickering	
Drawing Title The Roseberry Housetype Planning Layouts	
 Penstemon Homes Yorkshire Penstemon House Fulford York YO18 4BE Tel: 01904 842199 Fax: 01904 526142 www.penstemonhomes.com	
Scale: 1:100 @ A3	Drawn: BLW Date: Sept 2014
File: 8\Drawings\02 Standard Drawings\040808 Core House Type	
Drawing No. 687 / RG / A3-Planning / 01	Rev -

DATE
29/07